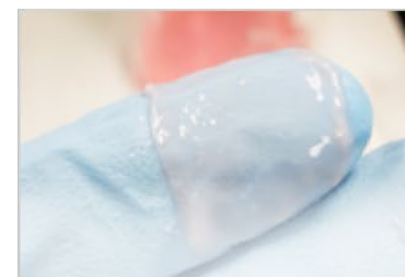
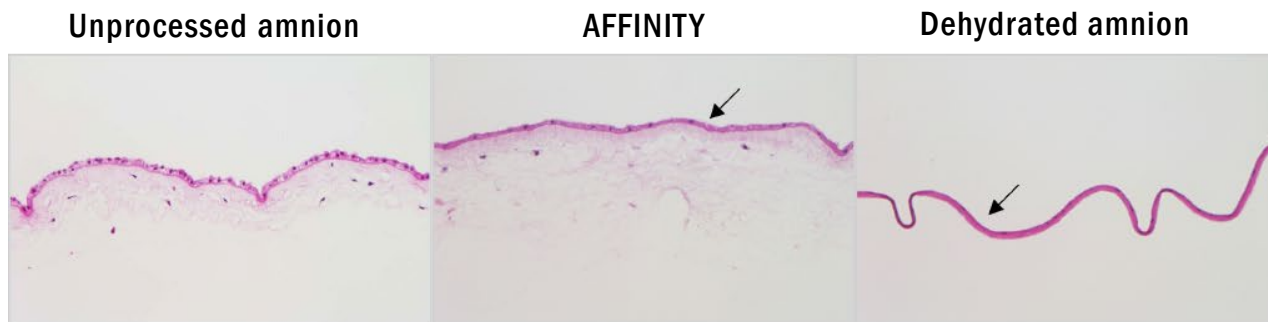


AFFINITY® AND NOVACHOR® MAINTAIN NATIVE TISSUE ARCHITECTURE

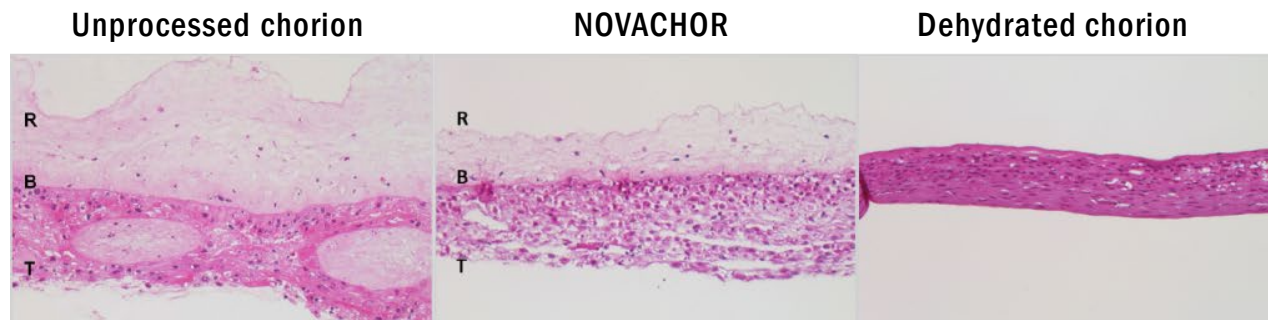
SIGNIFICANTLY THICKER COMPARED TO DEHYDRATED AMNION AND CHORION^{1,2}



Thickness = 59.9 μm (± 23.5)

| Affinity®

**3X THICKER
VS DEHYDRATED AMNION¹**



Thickness = 156.0 μm (± 58.6)

| Novachor®

**4.2X THICKER
VS DEHYDRATED CHORION²**

Representative histologic images of hematoxylin- and eosin-stained cross-sections at 20X magnification. Black arrows indicate the epithelial layer. R=reticular layer; B=basement membrane; T=trophoblast layer.